

EMIGRE

FONT

LIBRARY

A~Z

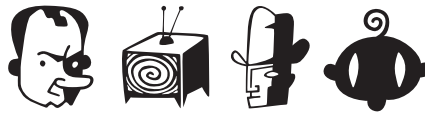
Summer/Fall 2011



Cheeky

ABCDEFGHabcdefgh

ARBITRARY SANS REGULAR, BOLD



BIG CHEESE 126 ILLUSTRATIONS

friendly

ABCDEFGHIJabcdefghi

CHOLLA ADDITIONAL ITALICS PACKAGE

LOVE

ABCDEFGHI

BACKSPACER ROUND, SQUARE

Humor

ABCDEFGHabcdefgh

BLOCKHEAD ALPHABET

glimpse

ABCDEFGHIABCDEFGHI

CHOLLA WIDE AND UNICASE

Award

ABCDEFGHIabcdefghi

BASE 12 SANS REGULAR, ITALIC, BOLD + SMALL CAPS



BLOCKHEAD 372 ILLUSTRATIONS

karma

ABCDEFGHabcdefgh

CHOLLA ADDITIONAL WIDES + ITALICS

Inspire

ABCDEFGHabcdefgh

BASE 12 SERIF REGULAR, ITALIC, BOLD + SMALL CAPS

HOPE

ABCDEFGHabcdefgh

BROTHERS REG., SLANT, BOLD + WORD LOGOS

WINE

ABCDEFGHabcdefgh

CITIZEN LIGHT AND BOLD

Ankle

ABCDEFGHIabcdefghi

BASE 9 REGULAR, ITALIC, BOLD + SMALL CAPS

Emotion

ABCDEFGHIJabcdefghij

CHOLLA SANS THIN, REGULAR, ITALIC AND BOLD

PROMISES

ABCDEFGHIJKABCDEFGHIJK

COUNCIL REGULAR + WORD LOGOS

Hailing

ABCDEFGHabcdefghi

BASE MONO NARROW THIN, REGULAR, BOLD + ITALICS

Flashes

ABCDEFGHabcdefgh

CHOLLA SLAB THIN, REGULAR, OBLIQUE AND BOLD

Avenue

ABCDEFGHIGHabcdefgh

DALLIANCE ROMAN, LIGS, SMALL CAPS AND FRACTIONS

attain

ABCDEFGHabcdefgh

BASE MONO WIDE THIN, REG., BOLD + ITALICS

Rank

ABCDEFGHabcdefgh

CHOLLA SLAB ULTRA BOLD, ULTRA BOLD OBLIQUE

Artsy

ABCDEFGHIABCDEFGHI

DALLIANCE SCRIPT, LIGATURES, DISPLAY AND FRACTIONS



DALLIANCE FLOURISHES

Tuxedo

ABCDEFGHIJ|abcdefghij

ELEKTRIX LIGHT AND BOLD



FELLAPARTS 170 ILLUSTRATIONS

Hungry

ABCDEFGG|abcdefghg

DEAD HISTORY ROMAN AND BOLD

Subjeected

ABCDEFGHI|jklm

ELLIOTT'S 6 FONT SET

Dating

ABCDEFGH|abcdefgh

FILOSOFIA REGULAR, ITALIC, BOLD AND SMALL CAPS

Lights

ABCDEFGHI|abcdefghi

DEMOCRATICA REGULAR AND BOLD

FLYING

ABCDEFGHIJKL

EXOCET LIGHT, MEDIUM AND HEAVY

HONEST

ABCDEFGH|abcdefghi

FILOSOFIA GRAND, GRAND BOLD AND UNICASE

WUN

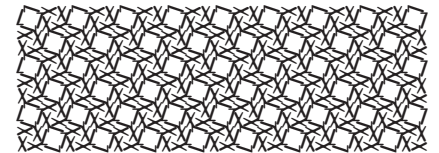
ABCDEF|abcdefgi

DOGMA BOLD, SCRIPT AND BLACK

Strolling

ABCDEFGHI|abcdefghi

FAIRPLEX NARROW BOOK AND BOLD



HYPNOPAEDIA 140 ILLUSTRATIONS

SORRY

ABCDEF|abcdefg

DOGMA OUTLINE AND EXTRA OUTLINE

WILD

ABCDEFGH|abcdefghi

FAIRPLEX NARROW MEDIUM AND BLACK

darling

ABCDEFG|abcdefgh

JOURNAL TEXT, ITALIC AND ULTRA

Exhaust

ABCDEFGH|abcdefgh

EIDETIC NEO REGULAR, ITALIC, BOLD AND BOLD ITALIC

Money

ABCDEFG|abcdefgh

FAIRPLEX WIDE BOOK AND BOLD

funny

ABCDE|abcdefg

JOURNAL BOLD AND ULTRA BOLD

Tender

ABCDEFGH|abcdefghi

EIDETIC NEO BLACK, OMNI, SMALL CAPS AND FRACTIONS

Flame

ABCDEFG|abcdefgh

FAIRPLEX WIDE MEDIUM AND BLACK

Beautiful

ABCDEFG|abcdefgh

KEEDY SANS REGULAR AND BOLD

G I R L

ABCDEFGHIJabcdefgh

LO-RES NINES

western

ABCDEFGHIJabcdefghi

LO-RES TEENS

distinctions

ABCDEFGHIJabcdefgh

LO-RES TWENTIES

Judge

ABCDEFGHIJabcdefgh

LOS FELIZ ROMAN, ITALIC, BOLD AND BOLD ITALIC

stories

ABCDEFGHIJabcdefghi

LUNATIX LIGHT AND BOLD

Antenna

ABCDEFGHIJabcdefgh

MALAGA REGULAR, BOLD AND ITALICS

North

ABCDEFGHIJabcdefgh

MALAGA MEDIUM, BLACK AND ITALICS

Timeless

ABCDEFGHIJabcdefghi

MALAGA NARROW REGULAR, BOLD AND ITALICS

Canyon

ABCDEFGHIJabcdefghi

MALAGA NARROW MEDIUM, BLACK AND ITALICS

RESPECT

ABCDEFGHIJABCDEFGHIJ

MASON SERIF REGULAR, ALTERNATE, BOLD AND ALT. BOLD

C O O L

ABCDEFGHIJABCDEFGHIJ

MASON SANS REGULAR, ALTERNATE, BOLD AND ALT. BOLD

minimal

ABCDEFGHIJabcdefgh

MATRIX II BOOK, REGULAR AND BOLD

Solution

ABCDEFGHIJabcdefgh

MATRIX II ITALIC BOOK, REGULAR AND BOLD

AMBITION

ABCDEFGHIJABCDEFGHIJ

MATRIX II SMALL CAPS BOOK, REGULAR AND BOLD

DINER

ABCDEFGHIJabcdefgh

MATRIX II EXTRA BOLD, NARROW AND WIDE

fantastic

ABCDEFGHIJabcdefgh

MATRIX II SCRIPT BOOK, REGULAR AND BOLD

WHATEVER

ABCDEFGHIJabcdefghij

MATRIX II TALL REGULAR AND SEMI

THEM

ABCDEFGHIJabcdefgh

MATRIX INLINE EXTRA BOLD AND SCRIPT

WRTE

ABCDEFGHIJabcdefgh

MISSIONARY ILLUSTRATION FONT

TEDIOUS

ABCDEFGHIJABCDEFGHIJKL

MODULA SANS REGULAR, BOLD AND BLACK

UNDERSTANDING

ABCDEFGHIJABCDEFGHIJKL

MODULA SERIF REGULAR, BOLD AND BLACK

DEVOTION

ABCDEFGHIJKLMabcdefghijklm
MODULA ROUND SANS BLACK AND SMALL CAPS

Distractions

ABCDEFGHIJKLMabcdefghijklm
MODULA ROUND SERIF BLACK AND ULTRA + SMALL CAPS

compliment

ABCDEFGHIJKLMabcdefghijklm
MODULA RIBBED AND OUTLINED + SMALL CAPS

modern

ABCDEFGHIabcdefg
MOTION LIGHT AND BOLD

January

ABCDEFGHIJKLMabcdefghijklm
MRS EAVES ROMAN, ITALIC, BOLD AND SMALL CAPS

Œffrky

MB LA Œ UP et gi ip it sp
MRS EAVES JUST LIGATURES, ROMAN, ITALIC AND BOLD

Honey

ABCDEFGHIJKLMabcdefghijklm
MRS EAVES XL SERIF REG., ITALIC, BOLD AND BOLD ITALIC

Quarterly

ABCDEFGHIJKLMabcdefghijklm
MRS EAVES XL SERIF NAR. REG, ITALIC, BOLD AND B. ITAL.

Alternative

ABCDEFGHIJKLMabcdefghijklm
MR EAVES SANS 6 WEIGHTS + ALTS AND MODERN VERSION

Tonight

ABCDEFGHIJKLMabcdefghijklm
MR EAVES XL SANS 7 WEIGHTS + ALTS AND MOD VERSION

MILKY

ABCDEFGHIABCDEFGHI
NARLY LIGHT, REGULAR, BOLD, INLINE AND OUTLINE

Bridges

ABCDEFGHIABCDEFGHI
NOT CASLON

HEARTY

ABCDEFGHIJKLMabcdefghijklm
OBLONG REGULAR AND BOLD

Nerves

ABCDEFGHIJKLMabcdefghijklm
OTTOMAT BOOK, ITALIC AND BOLD

MANY

ABCDEFGHIJKLMabcdefghijklm
OUTWEST LIGHT, DARK, HALF EMPTY AND HALF FULL

maid

ABCDEFGHIJKLMabcdefghijklm
PLATELET THIN, REGULAR AND HEAVY



SILENCE

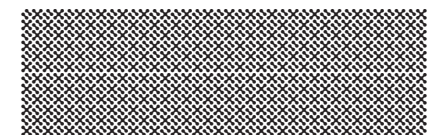
ABCDEFGHIJKLMabcdefghijklm
PRIORI SANS REGULAR, BOLD + ALTS AND SMALL CAPS

Historic

ABCDEFGHIJKLMabcdefghijklm
PRIORI SERIF REGULAR, BOLD, + ALTS AND SMALL CAPS

ROCK

ABCDEFGHIJKLMabcdefghijklm
PRIORI SANS EXTREMES LIGHT, ULTRA LIGHT, BLACK



Cradle

ABCDEF GHIJKLMNOPQRSTUVWXYZ

REMEDY SINGLE, DOUBLE AND EXTRAS

Bravery

ABCDEF GHIJKLMNOPQRSTUVWXYZ

SABBATH BLACK REGULAR AND HEAVY

TYPEWRITER

ABCDEFGHIJKLMN OPQRSTUVWXYZ

SENATOR THIN, DEMI AND ULTRA

monotone

ABCDEFGHIJKLMN OPQRSTUVWXYZ

SODA SCRIPT LIGHT, BOLD AND EXTRAS

Familiar

ABCDEFGHIJKLMN OPQRSTUVWXYZ

SOLEX REGULAR, ITALIC, BOLD AND BOLD ITALIC

ANIMATE

ABCDEFGHIJKLMN OPQRSTUVWXYZ

SOLEX MEDIUM, MEDIUM ITALIC, BLACK AND BLACK ITALIC

MOVIE

ABCDEFGHIJKLMN OPQRSTUVWXYZ

SUBURBAN LIGHT AND BOLD

Popcorn and SODA

ABCDEFGHIJKLMN OPQRSTUVWXYZ

TALL PACK

Endings

ABCDEFGHIJKLMN OPQRSTUVWXYZ

TARZANA NARROW REGULAR, ITALIC, BOLD AND B. ITALIC

Knoll

ABCDEFGHIJKLMN OPQRSTUVWXYZ

TARZANA WIDE REGULAR, ITALIC, BOLD AND BOLD ITALIC

Service

ABCDEFGHIJKLMN OPQRSTUVWXYZ

TEMPLATE GOTHIC REGULAR AND BOLD



THINGBAT 111 ILLUSTRATIONS

ANSWER

ABCDEFGHIJKLMN OPQRSTUVWXYZ

TOTALLY GOTHIC AND GLYPHIC

Literary

ABCDEFGHIJKLMN OPQRSTUVWXYZ

TRIBUTE ROMAN AND ITALIC + SMALL CAPS AND LIGATURES

Quickly

ABCDEFGHIJKLMN OPQRSTUVWXYZ

TRIPLEX SANS LIGHT, BOLD AND EXTRA BOLD

Hailing

ABCDEFGHIJKLMN OPQRSTUVWXYZ

TRIPLEX SERIF LIGHT, BOLD AND EXTRA BOLD

Demanding

ABCDEFGHIJKLMN OPQRSTUVWXYZ

TRIPLEX CONDENSED SANS REGULAR AND BLACK

Approach

ABCDEFGHIJKLMN OPQRSTUVWXYZ

TRIPLEX CONDENSED SERIF REGULAR AND BLACK

fantastic

ABCDEFGHIJKLMN OPQRSTUVWXYZ

TRIPLEX ITALIC LIGHT, BOLD AND EXTRA BOLD

braid

ABCDEFGHIJKLMN OPQRSTUVWXYZ

VARIEX LIGHT, REGULAR AND BOLD

Reckless

ABCDEFGHIJKLMN OPQRSTUVWXYZ

VENETTA LIGHT, ITALIC, SMALL CAPS, FRACTIONS + BOLD

Exhaust

ABCDEFGHIHabcdefghi

VENDETTA MEDIUM, ITALIC, SMALL CAPS, FRACT., + BOLD

Change

ABCDEFGHIGabcdefghi

VISTA SANS PACKAGE ONE

Grinning

ABCDEFGHIGabcdefghi

VISTA SANS PACKAGE THREE

Mantra

ABCDEFGHIHIjabcdefghijk

VISTA SANS NARROW PACKAGE ONE

Paramount

ABCDEFGHIHabcdefghi

VISTA NARROW PACKAGE THREE

Raider

ABCDEFGHIGabcdefg

VISTA SLAB PACKAGE ONE

Quantity

ABCDEFGHIGabcdefgh

VISTA SLAB PACKAGE THREE



WHIRLIGIG 152 ILLUSTRATIONS



ZEITGUYS 126 ILLUSTRATIONS

NEW RELEASES



ARCH

ABCDEFGHIJKLM

PRIORI ACUTE

Money

ABCDEFGHIGabcdefg

BASE 900 LIGHT, REGULAR, MEDIUM, BOLD AND HEAVY

Partner

ABCDEFGHIGabcdefg

ALDA LIGHT, REGULAR AND BOLD

TYPEFACE DESIGNERS

- Mark Andresen **NotCaslon**
- Bob Aufuldish **Big Cheese, ZeitGuys**
- Jonathan Barnbrook **Exocet, Mason, Priori**
- Rodrigo Cavazos **Eidetic Neo**
- Barry Deck **Arbitrary, Template Gothic**
- Eric Donelan **Big Cheese, Zeitguys**
- John Downer **Brothers, Council, Triplex Italic, Vendetta**
- Xavier Dupré **Malaga, Vista**
- Elliott Peter Earls **Blue Eyeshadow, Jigsaw Dropshadow, Typhoid Mary 3D Light, Typhoid Mary 3D Dark, Venus Dioxide, Venus Dioxide Outlined**
- Edward Fella **Fellaparts, OutWest**
- Martin Friedl **Poppi**
- Sibylle Hagmann **Cholla**
- Berton Hasebe **Alda**
- Frank Heine **Dalliance, Motion, Remedy, Tribute**
- John Hersey **Blockhead, Thingbat**
- Jeffery Keedy **Keedy Sans**
- Nancy Mazzei and Brian Kelly **Backspacer**
- Zuzana Licko **Base 9, 12 and 900, Base Monospace, Citizen, Dogma, Elektriz, Filosofia, Hypnopaedia, Journal, Lo-Res, Lunatix, Matrix II, Modula, Mrs Eaves, Narly, Oblong, Puzzler, Senator, Soda Script, Solex, Tarzana, Totally Gothic, Triplex, Variex, Whirligig**
- P. Scott Makela **Dead History**
- Conor Mangat **Platelet**
- Miles Newlyn **Democratica, Missionary**
- Claudio Piccinini **Ottomat**
- Christian Schwartz **Los Feliz**
- Rudy VanderLans **Suburban**

Order On-line

www.emigre.com

Fonts are available for immediate download. All other items are shipped within five business days.

Order by Fax

Print out a faxable order form at:
<http://www.emigre.com/EFax.php>
 and fax to: (530) 756 1300

Order by Mail

Mail the fax form and enclose payment by check or charge your credit card. All checks must be payable through a US bank, in US dollars.

Mail to:
 Emigre
 1700 Shattuck Ave., #307
 Berkeley, CA 94709
 U.S.A.

Trademarks: Emigre, Emigre Fonts, Alda, Arbitrary, Backspacer, Base, Big Cheese, Elliott's Blue Eye Shadow, Brothers, Cholla, Citizen, Council, Dalliance, Dead History, Democratica, Dogma, Eidetic Neo, Elektriz, Emperor, Emigre, Exocet, Fairplex, FellaParts, Filosofia, Hypnopaedia, Elliott's Jigsaw Dropshadow, Journal, Just Ligatures, Keedy, LigatureMaker, Los Feliz, Lo-Res, Lunatix, Malaga, Mason, Matrix, Matrix II, Missionary, Modula, Motion, Mr Eaves, Mrs Eaves, Narly, Not Caslon, Oakland, Oblong, Ottomat, OutWest, Platelet, Poppi, Priori, Puzzler, Quartet, Remedy, Sabbath Black, Senator, Smart Ligatures, Soda Script, Solex, Suburban, Tarzana, Template Gothic, Tribute, Totally Gothic, Triplex, Elliott's Typhoid Mary 3D, Universal, Variex, Vendetta, Elliott's Venus Dioxide, Vista, Whirligig and ZeitGuys are Trademarks of Emigre, Inc.
 Copyright © 2010 Emigre, Inc.